



Riversdale Road, N5 2SU

£625,000  
Leasehold





# Riversdale Road

£625,000

Leasehold

A stunning one-bedroom walled garden flat located on Riversdale Road, Highbury. This spacious and well-presented residence offers an abundance of natural light throughout this property. The property offers a large separate reception room with a large bay window, a very good size bedroom facing the private rear garden, kitchen / diner and a family bathroom. Riversdale Road is quiet & perfectly located for the local amenities of Highbury, and the delightful green spaces of Clissold Park & Highbury Fields. Excellent transport links are provided via Highbury & Islington Station, Arsenal and Finsbury Park (National Rail and Victoria Line), plus many, well-connected local bus routes.

- One Bedroom
- Very Well Presented
- Private Garden
- 694sqft/64.5sqm
- Mins walk to Clissold Park
- Mins Walk to Highbury Barn
- Great Location







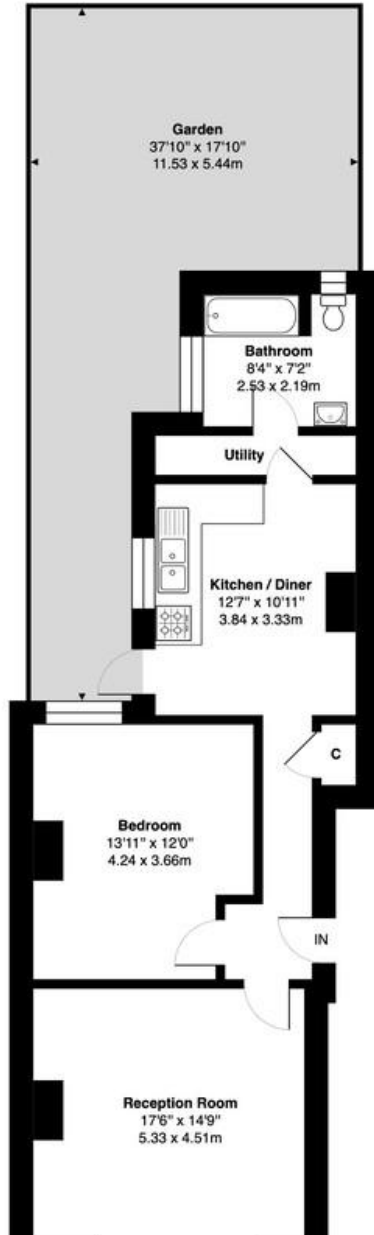


# Riversdale Road, N5

Approximate Gross Internal Area = 694 sq ft / 64.5 sq m

# DAVID ANDREW

your most valuable asset



Archway Office

671 Holloway Road  
London, N19 5SE

T (0)20 7619 3750

Highbury Office

90 Highbury Park  
London N5 2XE

T (0)20 7354 9111

Stroud Green Office

167 Stroud Green Road  
London N4 3PZ

T (0)20 7281 2000

General Contact

E [info@davidandrew.co.uk](mailto:info@davidandrew.co.uk)

W [www.davidandrew.co.uk](http://www.davidandrew.co.uk)



### Agent's Note:

Whilst Care has been exercised in the preparation of these sales particulars, statements about the property must not be relied upon as representations of statements or fact. Prospective purchasers must make and rely upon their own enquiries and those of professional representatives. The company accept not liability for any error contained in these particulars.

