



Narford Road, E5 8RD

£4,000 pcm



Narford Road

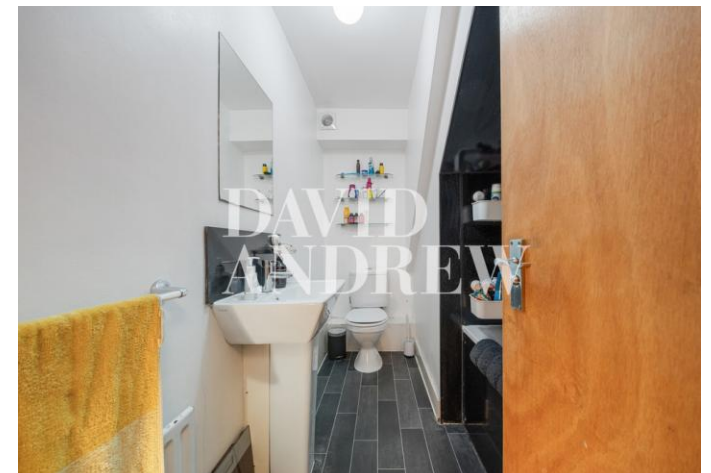
£4,000 pcm

Four bedroom garden flat arranged over two floors in this impressive period conversion. Located on a very quiet street in the heart of Stoke Newington. The property offers 118 sq. meters / 1273 Sq.ft of bright internal living space, including three double bedrooms, two bathrooms, and a semi-open plan living room with direct access to a private mature garden.

The location boasts excellent transport links and a vibrant community. Offered furnished. Available from the 29th June 2024

- Four bedrooms apartment
- Victorian conversion
- Private garden
- Arranged over two levels
- Two bathrooms
- 1278 Sqft / 118 Sqm
- Part furnished / furnished
- Available 29th June 2024





Notes

Archway Office

671 Holloway Road
London, N19 5SE

T (0)20 7619 3750

Highbury Office

90 Highbury Park
London N5 2XE

T (0)20 7354 9111

Stroud Green Office

167 Stroud Green Road
London N4 3PZ

T (0)20 7281 2000

General Contact

E info@davidandrew.co.uk

W www.davidandrew.co.uk

Score	Energy rating	Current	Potential
92+	A		
81-91	B		
69-80	C	75 C	80 C
55-68	D		
39-54	E		
21-38	F		
1-20	G		

Agent's Note:
Whilst Care has been exercised in the preparation of these sales particulars, statements about the property must not be relied upon as representations of statements or fact. Prospective purchasers must make and rely upon their own enquiries and those of professional representatives. The company accept not liability for any error contained in these particulars.