



Louise White House, N19 3LU

£550,000
Leasehold



Louise White House

£550,000

Leasehold

This spacious two double bedroom garden flat, an ex-local authority property, spans 823 sq ft / 76.5 sqm within a desirable development. The flat provides generously-sized living spaces, complemented by a large private south facing garden, separate reception, a large kitchen diner, two double bedrooms, a bathroom, cloakroom and ample storage space throughout.

Boasting a convenient location, just a short walk from Archway Underground Station (Northern Line), Upper Holloway Overground Station, and the green spaces of Whittington Park, Waterlow Park, and Parliament Hill. Additionally, the area offers an abundance of local shops, bars, and restaurants in nearby Archway, Highgate Village, Crouch End, and Tufnell Park.

- 823 sq ft / 76.5 sqm
- Two double bedrooms
- Double glazed throughout
- Private south facing garden
- Generous kitchen/diner
- Separate reception room
- Plenty of storage - Garden shed
- Great transport links

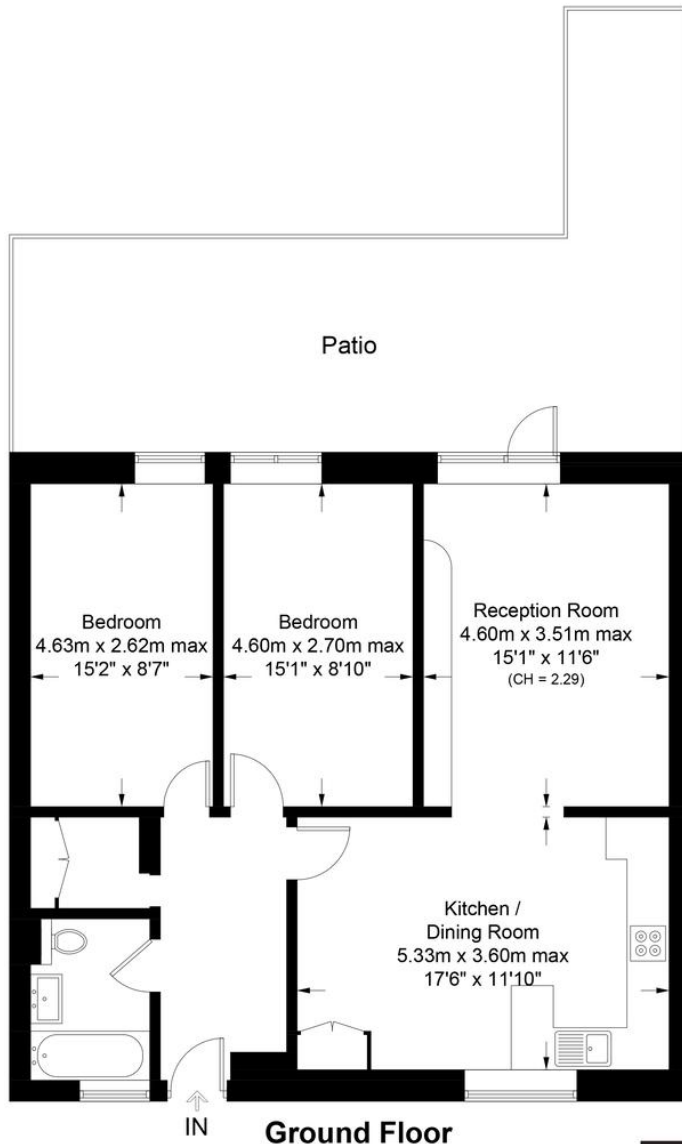






Louise White House, N19

Approximate Gross Internal Area = 823 sq ft / 76.5 sq m



This plan is for layout guidance only. Not drawn to scale unless stated. Windows and door openings are approximate. Whilst every care is taken in the preparation of this plan, please check all dimensions, shapes and compass bearings before making any decisions reliant upon them. (ID1161403)



Certified Property Measurer

DAVID ANDREW | your most valuable asset

DAVID ANDREW

your most valuable asset

Archway Office

671 Holloway Road
London, N19 5SE

T (0)20 7619 3750

Highbury Office

90 Highbury Park
London N5 2XE

T (0)20 7354 9111

Stroud Green Office

167 Stroud Green Road
London N4 3PZ

T (0)20 7281 2000

General Contact



www.davidandrew.co.uk

Score	Energy rating	Current	Potential
92+	A		
81-91	B		
69-80	C	72 C	78 C
55-68	D		
39-54	E		
21-38	F		
1-20	G		

Agent's Note:

Whilst Care has been exercised in the preparation of these sales particulars, statements about the property must not be relied upon as representations of statements or fact. Prospective purchasers must make and rely upon their own enquiries and those of professional representatives. The company accept not liability for any error contained in these particulars.

