

DA



Winchelsea Road, N17 6XQ

£3,700 pcm

Winchelsea Road

£3,700 pcm

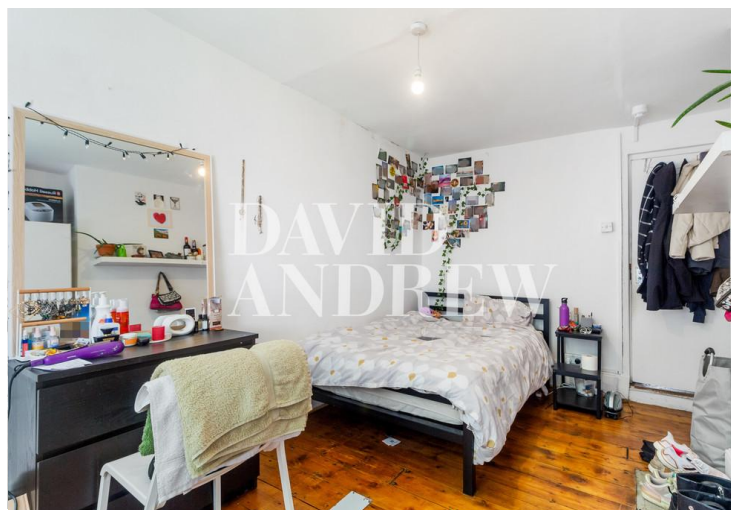
Presenting a rare opportunity to rent this charming 5 bedroom, 2 bathroom house located just a short 6 minute walk to Bruce Grove Station.

Property features focus on convenience and include 5 double bedrooms, two bathrooms with separate WC, practical kitchen and sitting area, large private garden for entertaining, gas central heating and double glazing windows to compliment.

Only a short 6 minute walk to Bruce Grove Station/ bus links and surrounded by an array of amenities.



- 5 Spacious Bedrooms
- Private Garden with Shed
- Separate WCs
- 2 Bathrooms
- Spacious 108sqm
- Available Late June
- 6 Minutes Walk to Bruce grove station / Bus Links
- Double Glaze Windows



Notes

DAVID ANDREW

your most valuable asset

Archway Office

671 Holloway Road
London, N19 5SE

T (0)20 7619 3750

Highbury Office

90 Highbury Park
London N5 2XE

T (0)20 7354 9111

Stroud Green Office

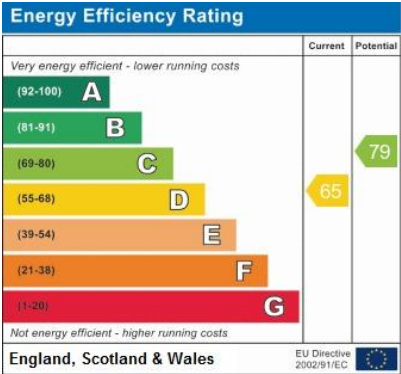
167 Stroud Green Road
London N4 3PZ

T (0)20 7281 2000

General Contact

E info@davidandrew.co.uk

W www.davidandrew.co.uk



Agent's Note:
Whilst Care has been exercised in the preparation of these sales particulars, statements about the property must not be relied upon as representations of statements or fact. Prospective purchasers must make and rely upon their own enquiries and those of professional representatives. The company accept not liability for any error contained in these particulars.

